




PRAMATM

MADE FOR INDIA - MADE BY INDIA - MADE IN INDIA

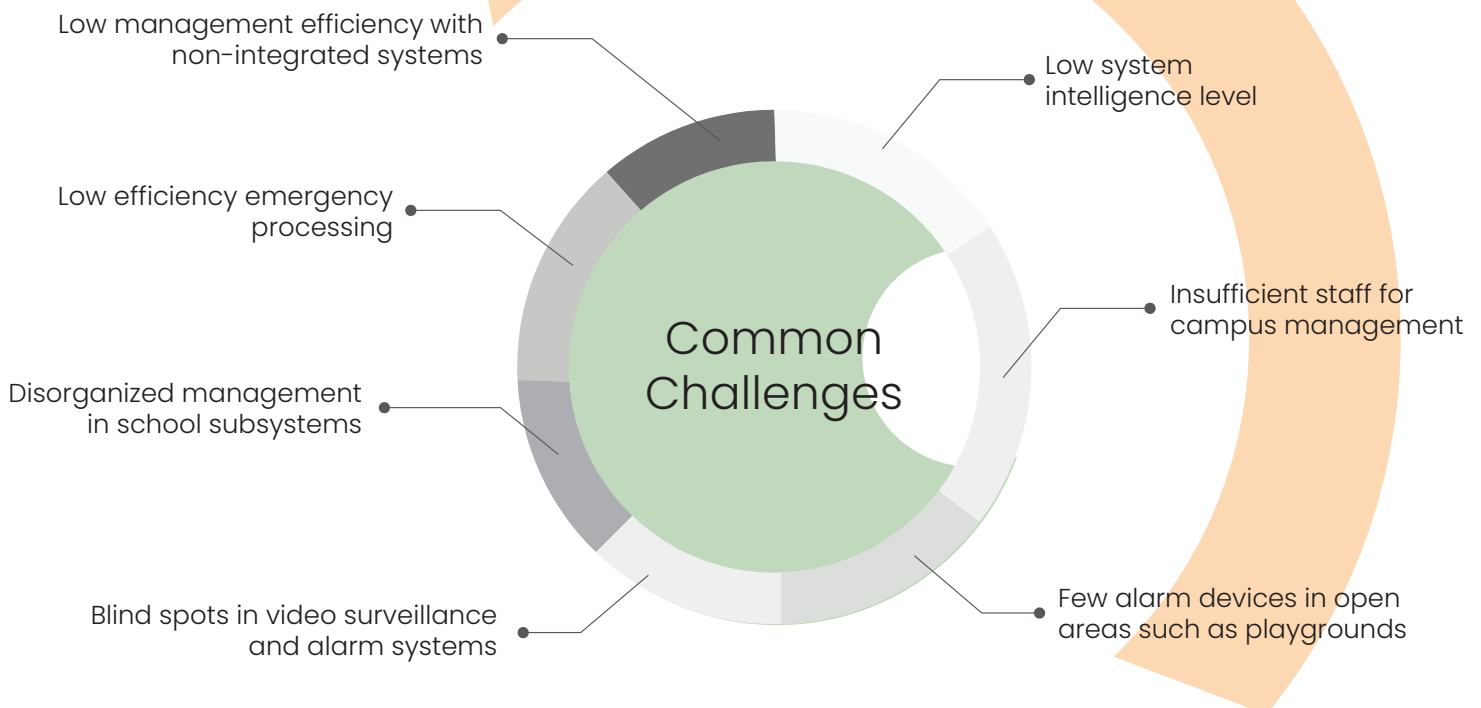
THE EDUCATION SOLUTION FOR CAMPUS SECURITY AND PROTECTION & FOR SCHOOL BUS SURVEILLANCE



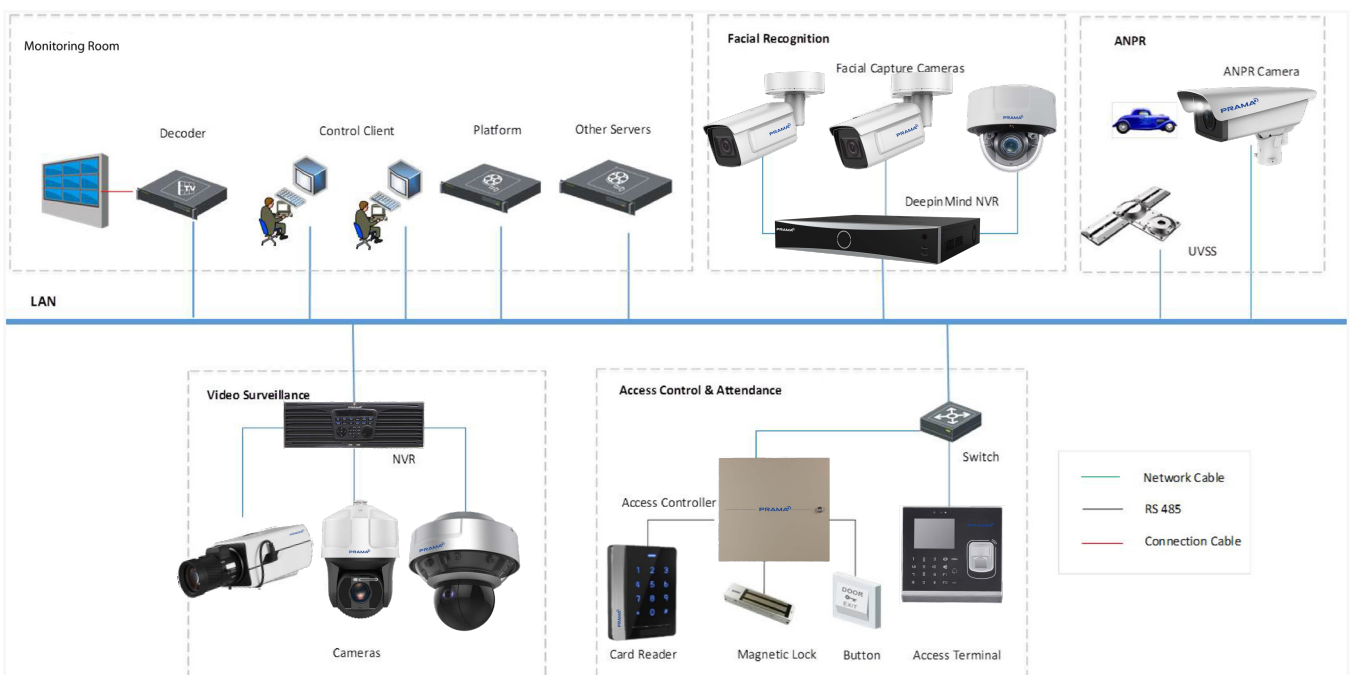
www.pramaindia.in

COMMON CAMPUS CHALLENGES

As students spend the majority of the day in schools, campus security is of paramount importance to every school administrator and every parent. In order to develop an effective security system, all the possible risks – including suspects breaking into campus, stealing, and threatening student safety – must be fully considered. A campus security and protection solution utilizing PRAMA's most advanced network, audio, video, and intelligent recognition technologies, ensures students, parents, and administrators can enjoy a secured and serene learning environment.

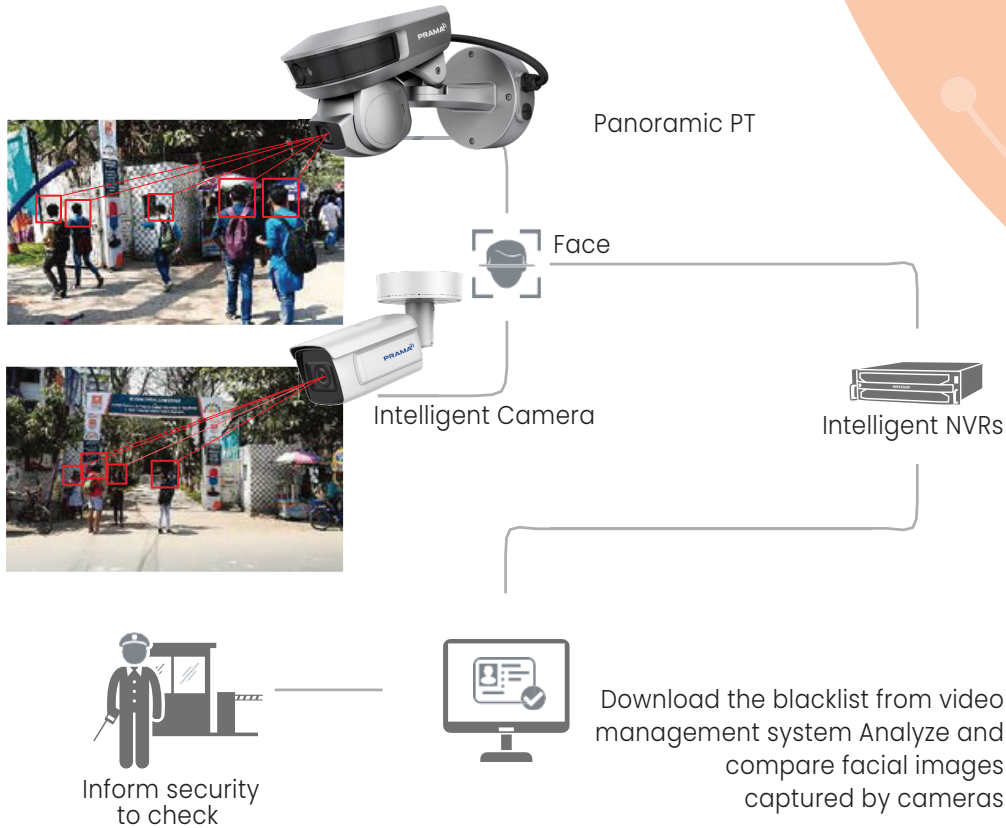


SYSTEM ARCHITECTURE



SCHOOL GATES

FACIAL IMAGE CAPTURE AND BLACKLIST ARMING



Through front-end cameras, the platform can perform real-time monitoring, face image capture, and alarm configuration.

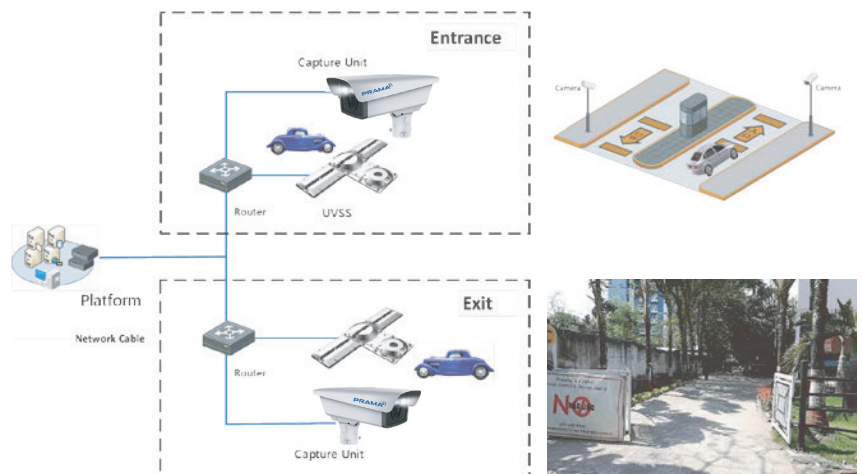
System Features

- Batch import of blacklist from VMS
- Downloading of face image library from VMS to intelligent devices
- Intelligent device scan run comparisons against different face libraries
- Stores all captured facial images in the center
- Receives real-time blacklist alarm
- Searches by stored image for suspicious personnel

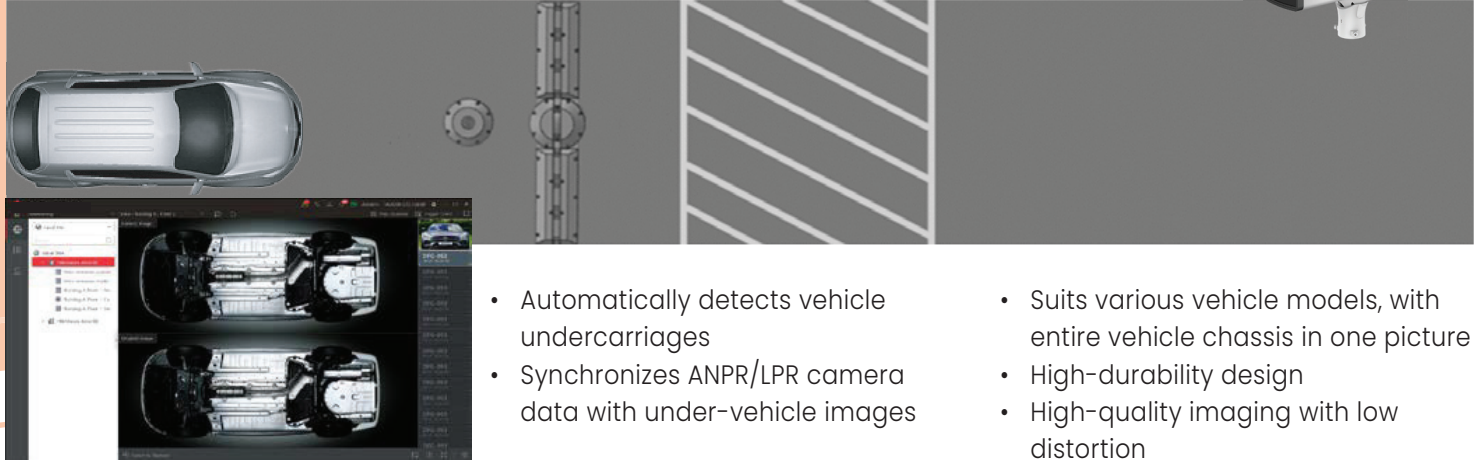
AUTOMATIC NUMBER PLATE RECOGNITION (ANPR)

Entryways constitute the first critical threshold for campuses. Security guards must pay close attention to vehicles to prevent security events.

- Automatic Number Plate Recognition & Recording
- Vehicle List Management
- Blacklist Warning and Whitelist Recognition
- History Search & Report



UNDER VEHICLE SURVEILLANCE SYSTEM (UVSS)



- Automatically detects vehicle undercarriages
- Synchronizes ANPR/LPR camera data with under-vehicle images
- Suits various vehicle models, with entire vehicle chassis in one picture
- High-durability design
- High-quality imaging with low distortion

VIDEO SURVEILLANCE IN IMPORTANT SCENES

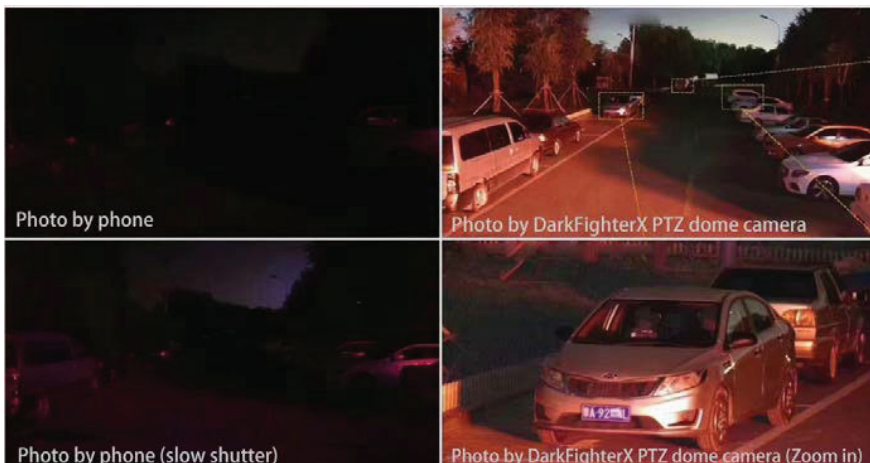
PUBLIC AREAS



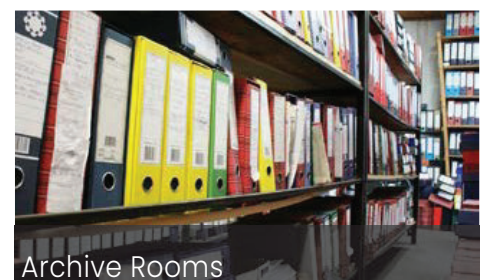
Panoramic Cameras provide a comprehensive view for large open areas as well as clear close-up video surveillance when needed.



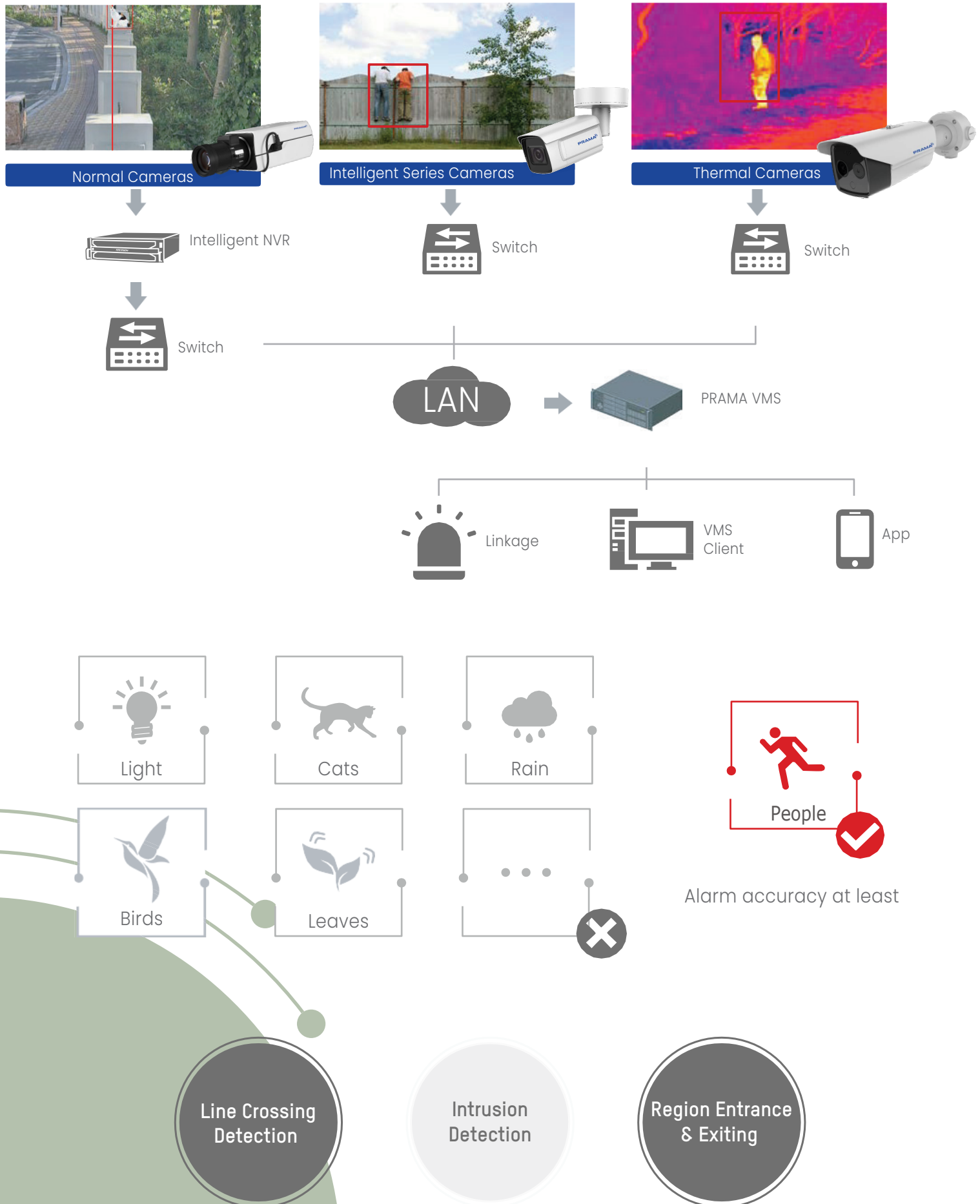
MAIN ROADS



Low-Light Performance cameras ensure video surveillance of the main roads is clear day and night.



PERIMETER PROTECTION



MONITORING ROOMS



- Up to 3 auxiliary screens for multiple channels and live view. Supports up to 256 cameras per live view
- Up to 8 auxiliary screens for multi-task operation

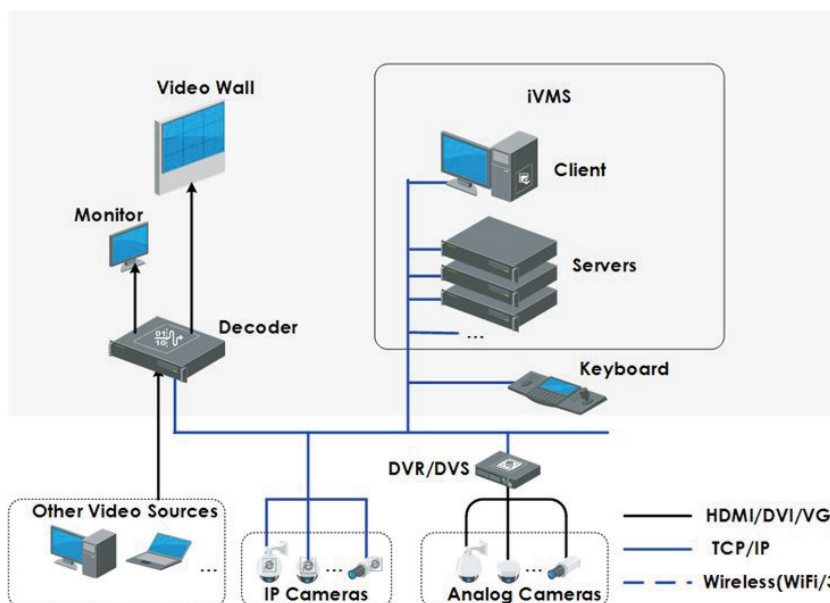
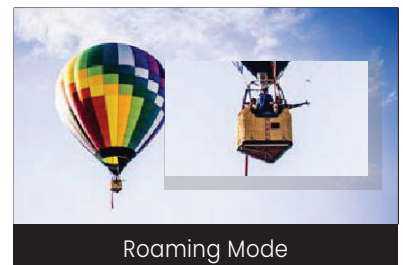
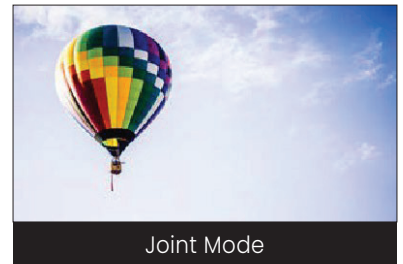
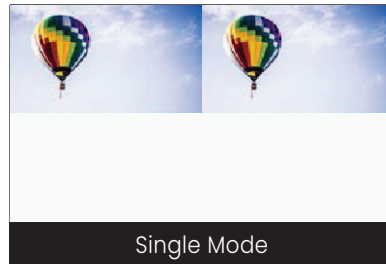
Live View Playback Alarm Linkage

Smart Wall Application

- Alarms pop up on Smart Wall
- Associated channel pushed to Smart Wall

Windows Operation

- High Brightness
- High Contrast
- Quick Response
- Color Enhancement
- Dynamic Self-Adaptive



- Powerful decoding capability
- PC signal input
- Joint screens for comprehensive and detailed video viewing
- Display enhancement
- Reliable system
- Easy maintenance

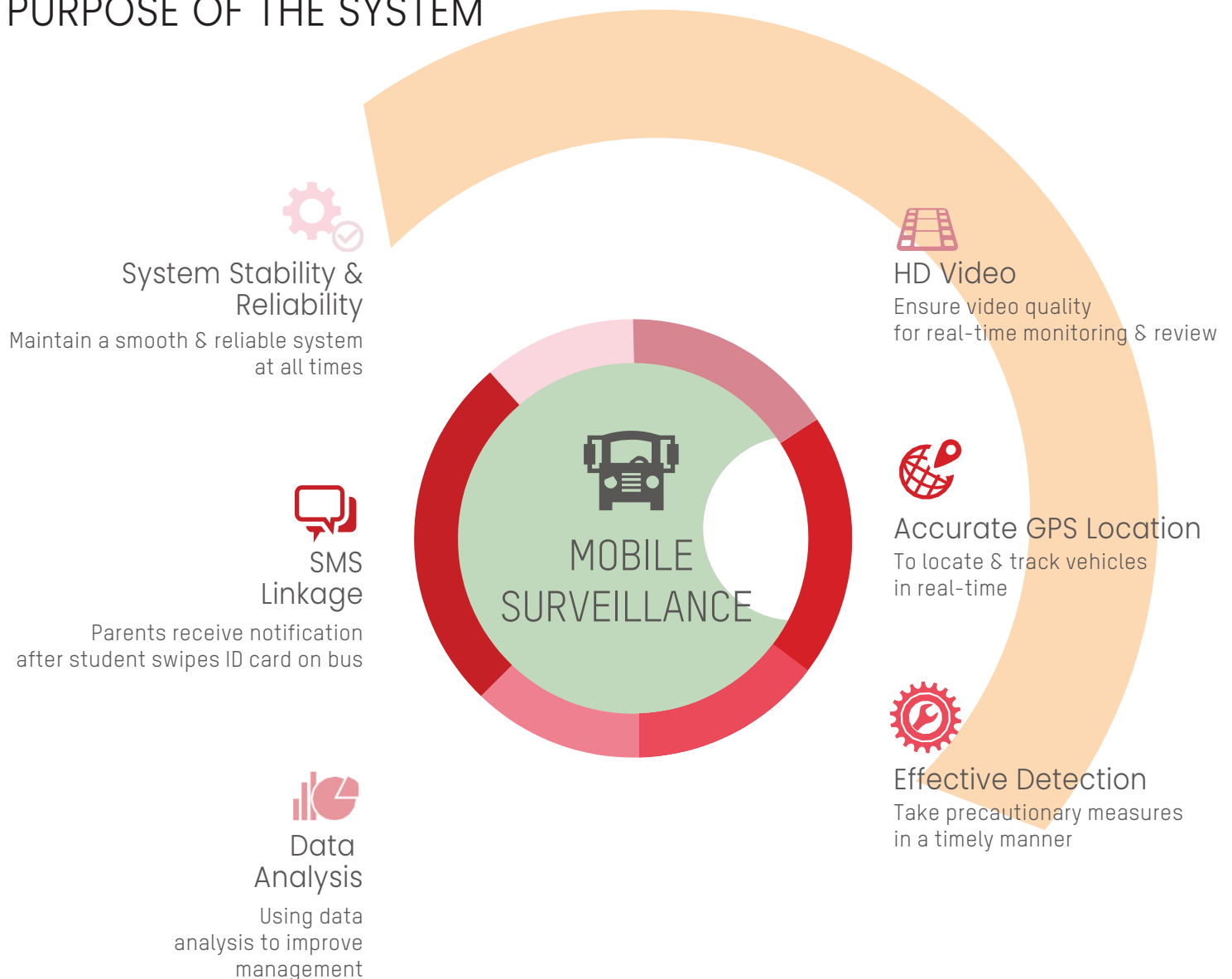
COMMON CHALLENGES FOR SCHOOL BUS

A school bus system is one of the most important transportation methods for students all over the world. But the potential safety risks associated with them often go overlooked. A school bus security system should be able to:

- Supervise drivers to prevent unsafe driving
- Capture the bus's interior and exterior for comprehensive monitoring
- Monitor the entire vehicle and ensure students remain safe to and from school

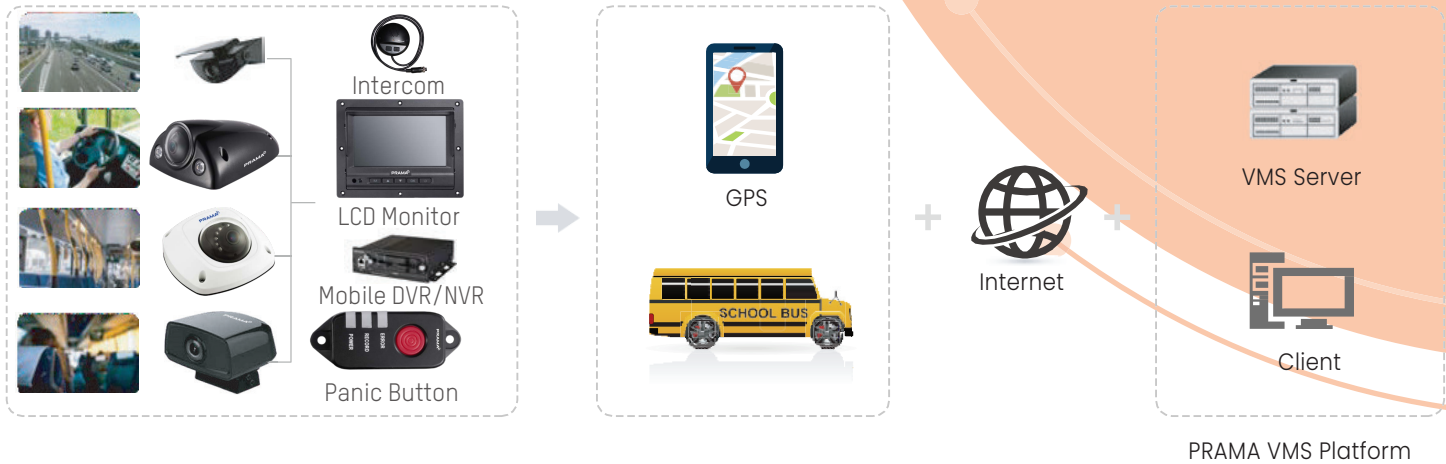


PURPOSE OF THE SYSTEM

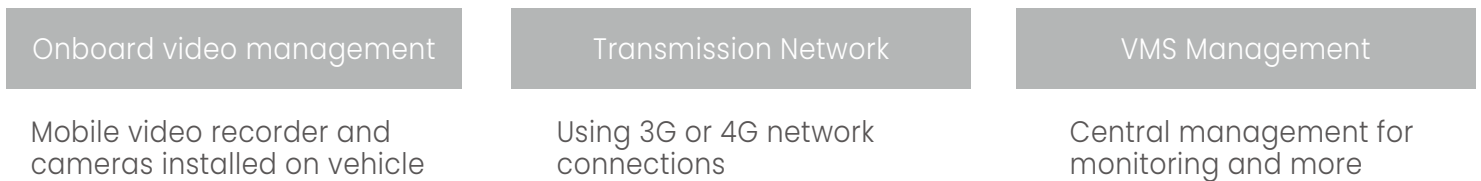


SYSTEM ARCHITECTURE

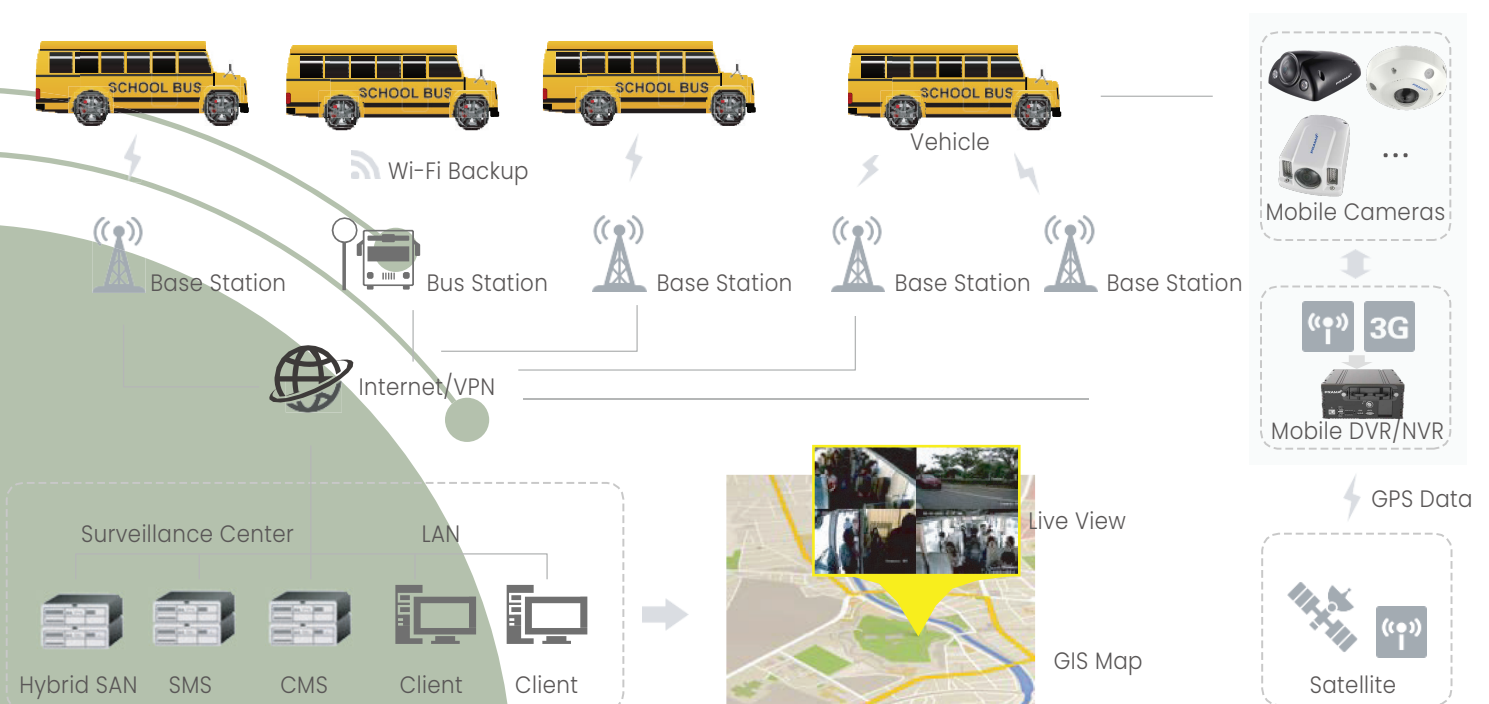
MOBILE VIDEO SURVEILLANCE SYSTEM



System Components for Mobile Surveillance Systems



MOBILE VIDEO SURVEILLANCE SYSTEM FOR MULTIPLE SCHOOL BUSES



SYSTEM COMPONENTS AND HIGHLIGHTS

ONBOARD VIDEO MANAGEMENT WITH FRONT END DEVICES



Accurate GPS location information is sent to the center in real-time and is stored for playback



High quality video footage is recorded locally. Remote access to video facilitates review and forensic evidence gathering

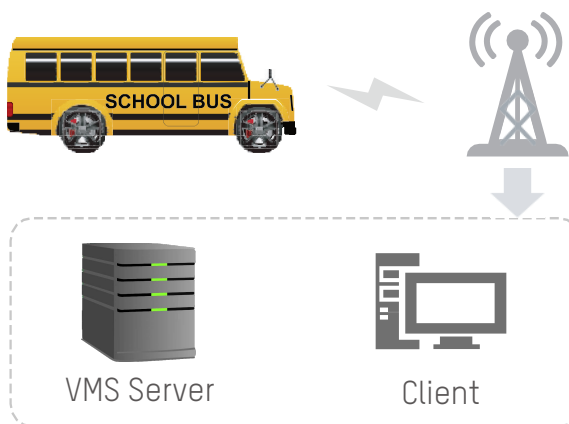


Two-way audio between driver and command center provides convenient communication when needed



When local alarm is triggered, real-time notifications will be sent to command center

TRANSMISSION NETWORK



Data stream and messaging transmit entirely across a wireless network:

- Device registration data
- Device "heartbeat" signal for backup
- Live view & playback stream
- GPS data
- Alarm data

**The ability to perform certain functions at a command center depends on local wireless network coverage, bandwidth, and quality. PRAMA engineers will assist in examining and/or creating the necessary parameters during installation process.*

VMS MANAGEMENT



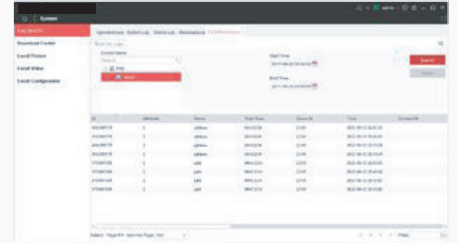
ADDITIONAL FEATURES

Optional Wi-Fi backup:

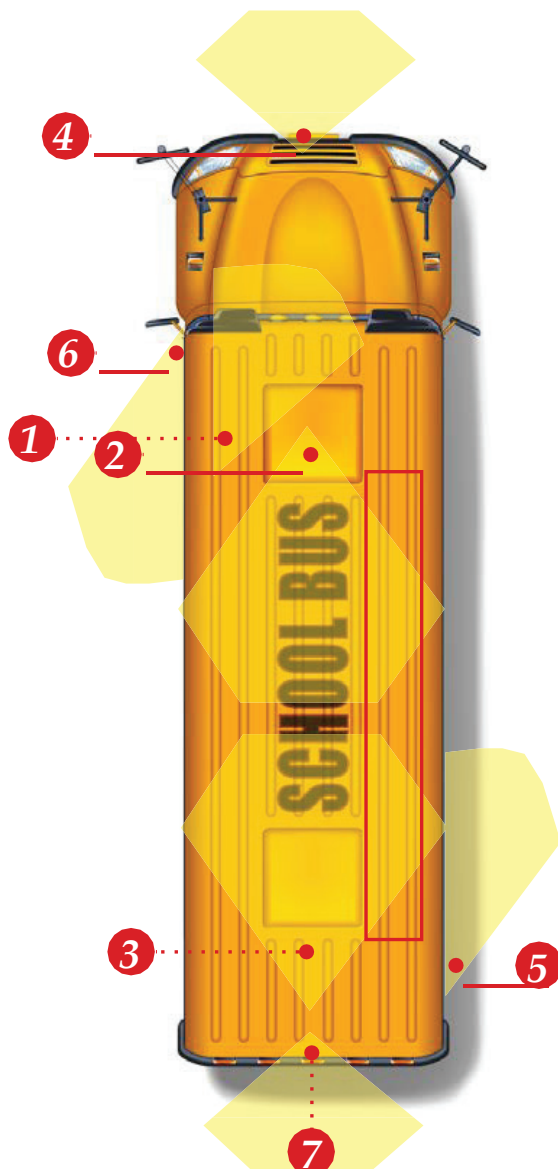
With high transmission speeds (over 30 Mbps per device), users can backup and secure all video footage of an entire day rapidly.

Log rides with student ID cards:

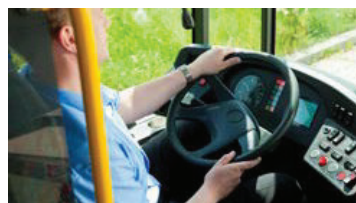
ID cards equipped with parent contact information send text messages as students board the bus. Information on a card also transmits to the command center for recording, reviewing, or exporting reports.



TYPICAL APPLICATION SCENARIO



Bus interior



Driver's seat



Bus exterior



Camera placement suggestion

- 1 Monitors driver seat and the entrance
- 2 Monitors the inside of the bus without blind spots
- 3 Monitors the inside of the bus without blind spots
- 4 Monitors the areas in front of the bus
- 5 Monitors entrance from the outside
- 6 Monitors the side traffic and exterior of the bus
- 7 Rear-facing security and traffic camera